

# AMERICAN DELUXE JAZZ BASS® V, RW/MN, 0194660/4662

## CONTROL ASSEMBLY

SOLDER BLACK WIRES FROM OUTPUT JACK & BRIDGE PLATE TO THIS LUG.

(23) GROUND LUG HERE

SOLDER BLACK WIRES FROM BRIDGE & NECK PU TO THIS LUG.

GROUND LUG ON CONTROL ASSY VOL POT ROTATED TO SIDE FOR WIRING CLARITY

SOLDER AND SHRINK TUBE  
FOLLOWING WIRES TOGETHER:

YELLOW WIRES FROM NECK PU & PANPOT

WHITE WIRES FROM PC BOARD & OUTPUT JACK

WHITE WIRES FROM BRIDGE PU & PANPOT

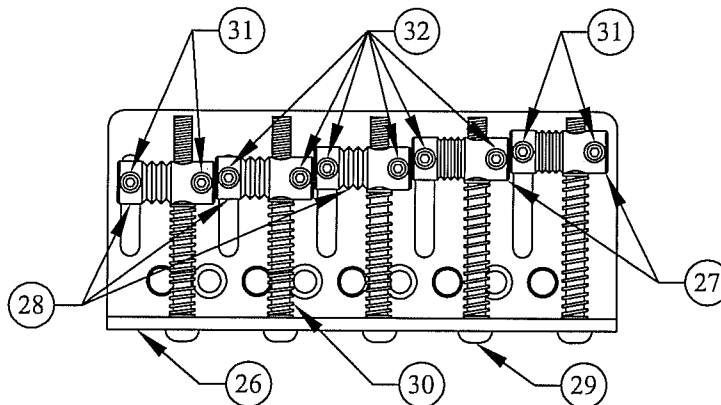
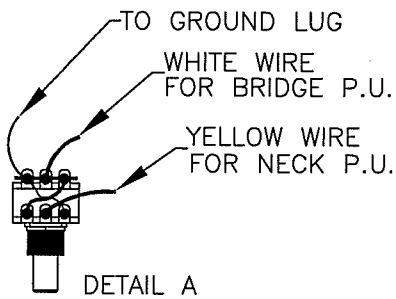
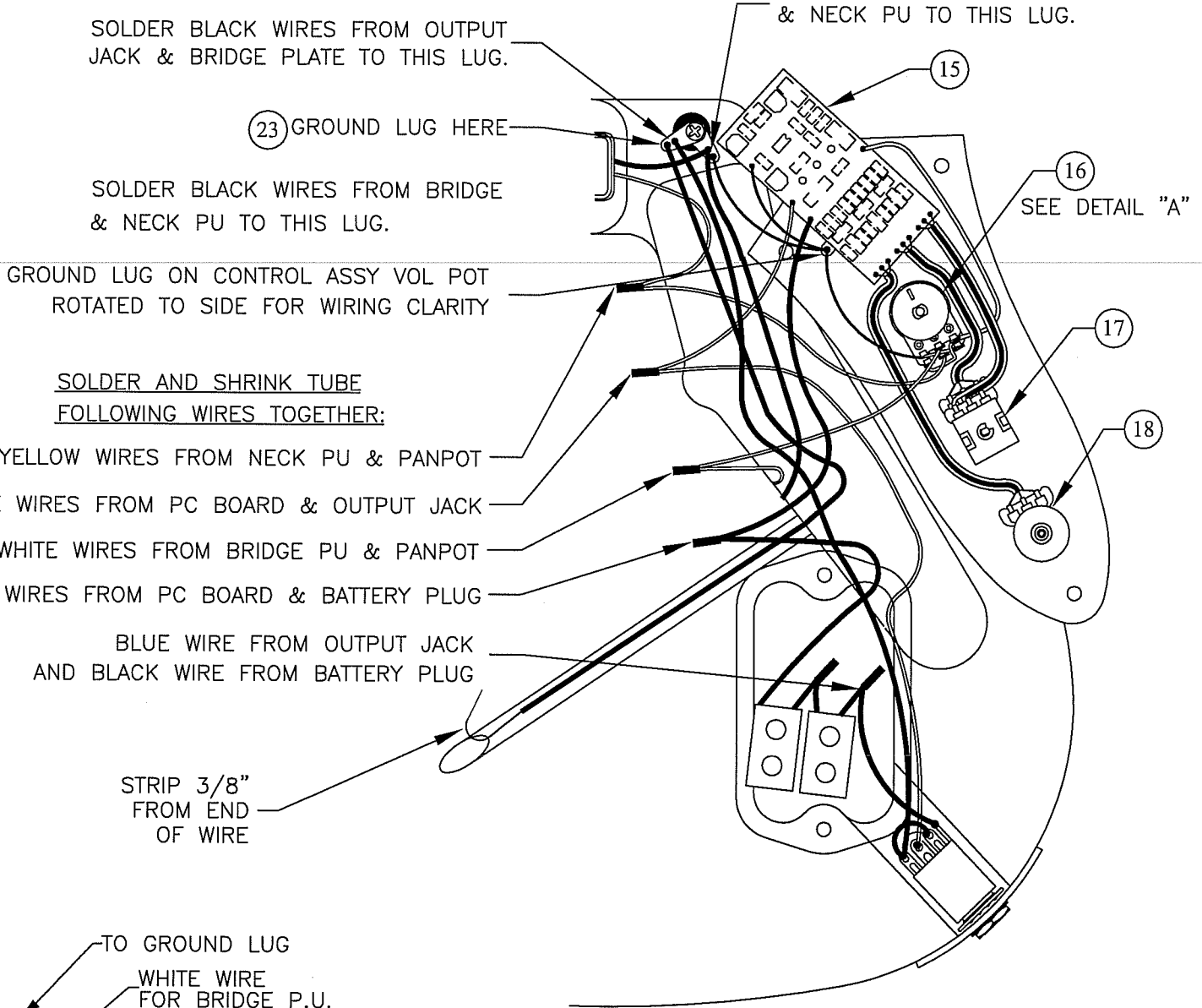
RED WIRES FROM PC BOARD & BATTERY PLUG

BLUE WIRE FROM OUTPUT JACK  
AND BLACK WIRE FROM BATTERY PLUG

STRIP 3/8"  
FROM END  
OF WIRE

SOLDER BLACK WIRES FROM BRIDGE & NECK PU TO THIS LUG.

SEE DETAIL "A"



BRIDGE ASSEMBLY

